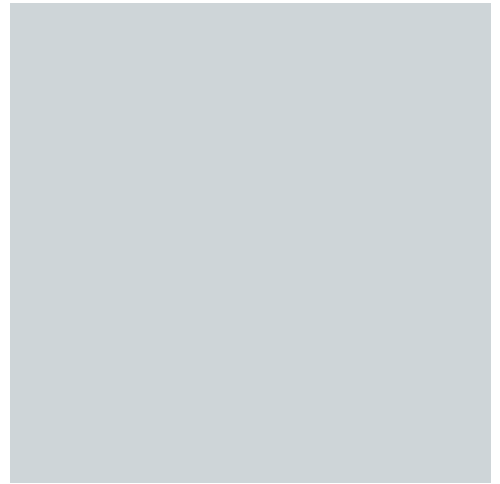


2022  
INTERIOR  
DESIGN  
TRENDS



FRAMING  
by design



LARSON · JUHL®





# 1 CONNECTION TO NATURE

The neutral, authentic tones and unique washes of natural wood bring any space together; connecting it to nature & adding warmth.

## Ash

White Ash is a beautiful wheat coloured timber with great warmth, and a feeling of age or long seasoning. A uniform grain waves and rolls through the surface of the timber. Consistency of colour and pattern make it an ideal material for use in interior decor.



## Cedar

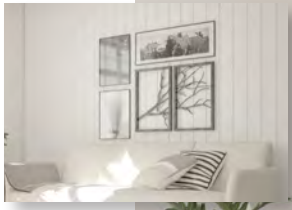
Cedar timber has wonderful tonal range; from light blonde through to warm honey. A rich grain dispersed with tight knots add pops of natural character. Cedars' lovely perfume makes this a really attractive timber.



LARSON · JUHL®

Featured frame collections by Larson Juhl

- a** White Ash Collection
- b** Oslo Collection
- c** Stockholm Collection

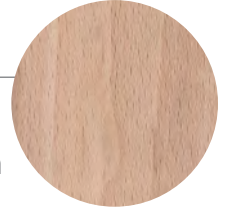


Before



After

## Beech



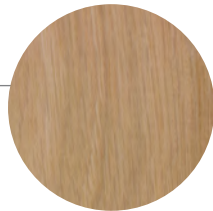
European Beech has a fresh feel with the subtle colouration of pink minerals, such as limestone or salt. Characteristic flecks throughout the surface give a fantastic patterned or woven effect, complimentary to polished contemporary interiors.



Creating a calming visual space with a connection to nature improves wellbeing, health and productivity.



## Oak



Oak timber has a long heritage in furnishings and interiors. Rich grain and light caramel tones are not only beautiful but impart a sense of strength, calm & permanence in a space.



Tip: Ask your framer for a deep profile to really show off the colour spectrum and capture full knots.

# 2 COLOURS OF THE EARTH

Earth tones. Soothing colours rooted in nature, offering subdued hues with great versatility. Deeper, earthy shades, including chocolate browns, moss greens, taupes, golden turmeric and deep green-toned blues, all fall into the earth tone category.

When thinking earth tones, many people will think coastal and rustic looks. The styling pictured shows that these colours also work superbly in chic, glamorous and edgy styling.

When it comes to your framing and art accents, a statement can be made using coloured and textured matting options.



LARSON · JUHL®

Also, take a closer look at your moulding options with your framer; there are so many unique and beautiful hand finished mouldings that can really elevate your theme. This is a strong colour trend in 2022 and is ideal to add warmth to family spaces. It is a trend expected to stand the test of time.



Colours of the earth draw inspiration from the outside and will always make a room feel more cosy.



Featured frame collections by Larson Juhl

- a** Boden Collection
- b** Micro-Tech Collection
- c** Masquerade Collection
- d** Pezzato Collection
- e** Bainbridge & James Cropper Mat boards

Using extra large canvases with float frames is a great way to create a feature wall without painting or renovation.

# 3 FEATURE WALLS

Feature walls provide great opportunities to experiment with textures, shapes, colours, and patterns. Also known as accent walls; canvas' offer a quick and easy way to liven up the space and, depending on what material you choose, they can be low cost. Feature walls can be high impact, but they do not have to be dominating. Sometimes a subtle pattern can inject just the right amount of interest into a room without overwhelming the space.

The term float frame or floating frame is used as the canvas appears to be suspended or "floating" within the frame. Ask your framer about what options they provide; they may even be able to print and stretch your canvas for you. If you have some artistic flair, it is also a rewarding DIY art and craft project using store bought canvas.



# 4 MULTIFUNCTIONAL SPACES

As work and home spaces intertwine more and more, it is not only important to meet basic functional requirements but also create a space that is productive, creative and calming.



Here are our top tips for creating a stylish Multifunctional space in your home:

**Indoor Plants** can reduce stress levels & boost mood.

**Use frames** to display your family photos and your achievements.

**Position your workstation** to take advantage of natural light.

**Prime your creative** side by including photos or artworks with colour and interest. Blue tones are rumoured to boost creativity.

**Address the ergonomics** of your space. A comfy chair is a must, but also think about your workstation and screen height; as well as accessibility to regularly used items.



---

Featured frame collections by Larson Juhl

- a** Hudson Collection
- b** 4392 Float Collection
- c** Hudson Certificate Frame
- d** Oslo Collection
- e** Perimeter Collection

Dramatic



Double or extra thick



Multi-opening



Double two-tone



Weighted



# MATTING MATTERS

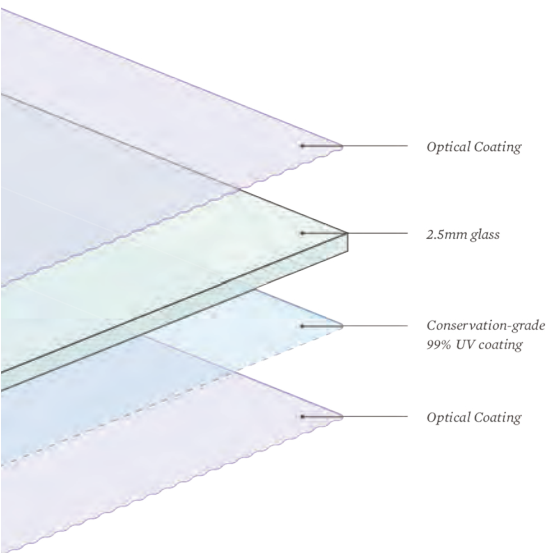
The matting is a key design element in any picture frame. It is also one of the simplest and best ways to give bold artistic impact to your photos or artworks.





# ANOTHER CLASS OF GLASS

	99 UV PROTECTION	ABRASION RESISTANCE	ANTI-REFLECTIVE	ANTI-STATIC	NON-GLARE	SHATTER RESISTANCE & SAFETY
<b>Museum Glass®</b> 99% UV protection. Amazing clarity.	◆		◆		◆	
<b>Conservation Clear®</b>	◆					
<b>UltraVue®UV70</b>			◆		◆	




**TRU VUE® UltraVue®UV70** is Australia's most popular custom framing glass giving unsurpassed clarity. Ask your Custom Framing Professional about a  **TRU VUE®** glazing option that works for you and your artwork.



# 5 GLOBAL INFLUENCES



“ Be creative with your framing choices with some of these globally influenced framing options ”

With a real lack of travel opportunity recently, our cultural itches remain unscratched. Try bringing the rich history and styling of your favourite destinations into your home. You can achieve a very tasteful cultural x-factor by using eclectic global accents available in frame styles, throws, cushions and artwork.

We expect European influences as well as countries representing a bohemian hand-crafted vibe to be popular in 2022. These brand-new framing options are perfect to bring the romance of travel into your home.

#### Featured frame collections by Larson Juhl

- a** Whitman Collection
- b** Bamboo Collection
- c** Perimeter Collection
- d** Berguere Collection



# 6 GALLERY WALLS

Featured frame collections  
by Larson Juhl

- a Chagall Collection
- b Boden Collection
- c Oslo Collection
- d XC Essentials Collection
- e Ash Collection

Creating a gallery wall is a simple way to bring style and personality to any home. It is a particularly great way to tell the story of your family and friends. It does not need to be done all at once; start with a few and build it up over time. All you need is a few basic tools and accessories. You will absolutely love the experience; from short listing your best photos or art, right through to the rewarding and impressive end result!

## Here are our top tips for curating a successful gallery wall:

**Go bold!** Don't be afraid to mix it up with frames, art, photos or colours; as this gives a real meaningful and personal feel. It's an excellent point of interest and a conversation starter in your home.

Go the **chic look**: selecting one type of frame and using consistent photo filters like, black and white or sepia will give a really sleek look.

**Create your composition** using both landscape and portrait images to add geometric interest.

Refer back to **"Matting Matters"** to add in some mat board techniques for a real wow factor.

If you are planning to go big straight away, think about your wall space size and **map your layout** on the floor. Ideally trace your layout onto some big sheets of light tracing paper and tape it to the wall. This will guide you on where to tap in your hangers.

Start building your gallery wall  
with Larson-Juhl photo frames  
from \$24



LARSON · JUHL®  
Make it Timeless



# 7 ARTISAN & HAND CRAFTED ITEMS



Make your home unique by putting a limit on “fast furniture” and avoiding throw away items that deteriorate after mere months. In 2022, we can expect to see people making considered investments in pieces to be treasured for a lifetime. Embrace the quality and timeless beauty of artisanal crafted, and one-of-a-kind beauties.

**You can frame almost anything  
you want, be creative!  
Visit your local custom framer,  
they have you covered.**



Your local custom framers' studio is the embodiment of this movement. With a focus on design, conservation & quality; every piece produced is unique and can be tailored to your exact taste and décor style. Fine framing is like a well-designed piece of furniture; it can enhance your space and your artwork; while giving you a better sense of connection with your home.

Your experienced custom framer will take you through a design experience that is engaging and rewarding. Sit down at the design table and be presented with a wide range of moulding, mat board and glass choices to suit your taste. Receive great advice and ideas on how to best show off and preserve your photographs, artwork or objects. It is a chance for you to enjoy collaborating with an expert to create your own unique pieces.

# FRAMING by design

You can frame anything you want not only photos or art.  
It is time to be creative, give a special touch to every room in your house.

**Visit your local custom framer today!**

Choose from a vast variety of styles and materials to make  
any area stylish and unique.



**du Moulin**  
GALLERY & FINE FRAMES

(02) 9552 4217

0421 284 217

36 Harris Street, Pyrmont NSW 2009

[www.dumoulingallery.com.au](http://www.dumoulingallery.com.au)

Proudly supported by

LARSON · JUHL®